

Screw
95°C

2000
Hours

High-end



- Screw type 95°C 2000hours capacity
- products suitable for high-end car audio

◆ SPECIFIC ATIONS

items	Characteristics	
Category temperature Range	-40~+95°C	
Rated voltage Range	16~50 _{VDC}	
Capacitance Tolerance	0.5~5.0F ±10% at (20°C, 120HZ)	
Leakage Current	I=5.0mA at Rated voltage (V)at 20°Cafter 5 minutes	
Low Temperature characteristics	Capacitance change $Z_{-40°C}/Z_{+20°C} \leq 12$	
Endurance	The following specifications shall be satisfied when the capacitors are restored to 20°C after subjected to DC voltage with the rated ripple current is applied (the peak voltage shall not exceed the rated voltage) for 2,000 hours at 95°C.	
	Capacitance change	≤±20% of the initial value
	D.F. (tanδ)	≤200% of the initial specified value
Shelf Life	The following specifications shall be satisfied when the capacitors are restored to 20°C after exposing them for 500 hours at 95°C without voltage applied. Before the measurement, the capacitor shall be preconditioned by applying voltage according to Item 4.1 of JIS C 5101-4	
	Capacitance change	≤±20% of the initial value
	D.F. (tanδ)	≤200% of the initial specified value

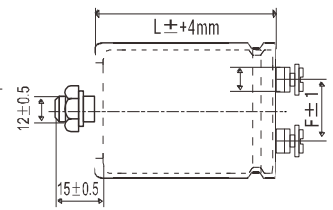
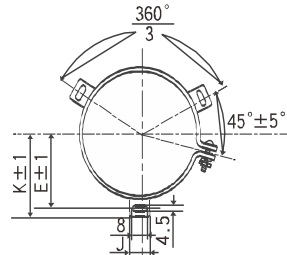
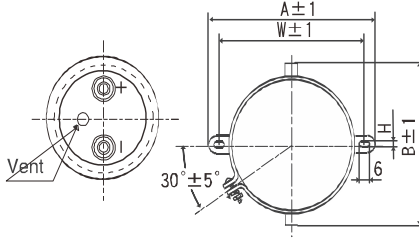
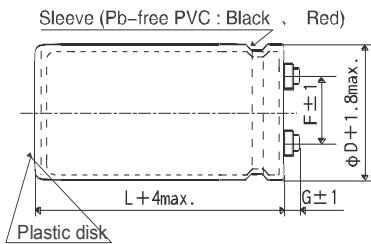
◆ DIMENSIONS[mm]

● Terminal Code : M5

● Mounting Clamp Code : B

● Mounting Clamp Code : C

● NO Mounting Clamp Code : N



Ø76.2: G=6

Ø89: G=5 Ø100: G=10

ØD	A	B	W	H	F
76.2	104.5	90.0	93.5	4.5	31.5

ØD	E	K	F	J
76.2	44.5	50.0	31.5	14.0
89	50.8	56.5	31.5	16.0
100	56.5	63.4	41.5	18.0

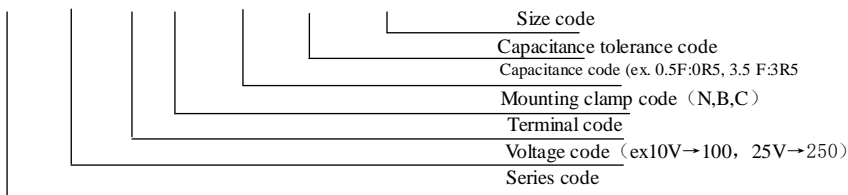
Screw specifications

~Plus hexagon-headed screw M5*0.8*10 M6*1.0*10 Ø100

Maximum screw tightening torque 3.23N.m The screw and the mounting clamp are separately supplied and not attached to the product

◆ PART NUMBERING SYSTEM

123 4 5 6 7 8 9 10 11 12 13 14 15 16
 LHC □□□ M5 □ □□□ M □□□□



Please refer to "Product code guide (screw-mount terminal type)"



SRANDRAD RATINGS

Cap	size	10			size	16				size	20			size	25		
F	D*L	I~	DL	ESR (mΩ)	D*L	I~	DL	ESR (mΩ)		D*L	I~	DL	ESR (mΩ)	D*L	I~	DL	ESR (mΩ)
0.5	76*120	13.5	1.0	3.02	76*150	18.2	0.8	1.59		76*215	18.8	0.8	1.38	76*215	24.5	0.8	1.02
0.6	76*120	14.9	1.0	2.53	76*150	22.3	0.8	1.42		76*215	20.0	0.8	1.18	76*215	26.8	0.8	0.93
0.7	76*120	16.0	1.0	2.18	76*150	24.4	1.0	1.33		76*215	21.6	1.0	1.13	76*215	28.9	1.0	0.88
0.8	76*120	17.1	1.0	1.92	76*215	28.5	1.0	1.25		76*215	23.0	1.0	1.07	76*215	30.9	1.0	0.83
0.9	76*150	21.3	1.0	1.72	76*215	30.6	1.0	1.16		76*215	24.4	1.0	0.99	76*215	32.7	1.0	0.78
1.0	76*150	22.5	1.5	1.56	76*215	34.4	1.0	1.06		76*215	25.7	1.0	0.92	100*240	34.4	1.0	0.72
1.2	76*215	24.7	1.5	1.32	76*215	36.7	1.0	1.0		76*215	28.1	1.0	0.87	100*240	37.6	1.0	0.68
1.5	76*215	27.6	1.5	1.07	100*240	39.8	1.5	0.97		100*240	31.4	1.5	0.84	100*240	42.0	1.5	0.66
2.0	76*215	31.0	3.5	0.93	100*270	41.6	1.5	0.86		100*240	36.0	1.5	0.76	100*240	48.5	1.5	0.57
2.2	76*215	32.5	3.5	0.84	100*240	45.8	1.5	0.78		100*240	37.7	1.5	0.70	100*260	50.8	1.5	0.52
2.5	100*220	36.3	3.5	0.79	100*240	52.0	3.5	0.74		100*240	40.2	3.5	0.67	100*260	54.1	3.5	0.5
3.0	100*220	39.8	3.5	0.71	100*240	55.0	3.5	0.66		100*260	44.0	3.5	0.55	100*260	59.2	3.5	0.45
3.5	100*240	43.0	4.0	0.65	100*240	58.2	3.5	0.62		100*260	47.5	3.5	0.52	100*260	63.9	3.5	0.43
4.0	100*240	46.0	4.0	0.62	100*240	60.0	3.5	0.60		100*260	50.8	3.5	0.50	100*260	68.3	3.5	0.42
4.5	100*240	48.7	5.0	0.58	100*260	64.5	4.0	0.56		100*260	53.9	3.5	0.47				
5.0	100*240	51.2	5.0	0.53	100*260	68.0	4.0	0.50		100*260	58.0	3.5	0.42				

Cap	size	10			size	16		
F	D*L	I~	DL	ESR (mΩ)	D*L	I~	DL	ESR (mΩ)
0.5	76*180	15.3	1.0		89*220	21.2	0.8	
0.6	89*160	16.1	1.0		76*230	24.1	0.8	
0.7	89*180	18.2	1.0					
0.8	89*200	19.5	1.0					
0.9	89*220	22.4	1.0					
1.0	89*230	25.1	1.5					

◆ RTED RIPPLE CURRENT MUTIERS

The ripple frequency and standard list of the specified value is not at the same time, please use the value is less than the following

Frequency Multiplier

Frequency (HZ)	120	300	1K	3K
coefficient	1.0	1.2	1.4	1.5

※ Note : The endurance of capacitors is shorted with internal heating produced by ripple current at the rate of halving the lifetime with every 5 to 10°C rise. When long life performance is required in actual use, the rms ripple current has to be reduced. Also, for the LB series capacitors, using them at operating voltage less than their rated voltage can extend their lifetime. For the details, please contact representative of capsun