



- Implement AC Servo amplifier Frequency converter Regeneration Caused by Frequent The High voltage Change
- For High frequency Switching power supply The Use And Power Supply The Voltage Changes in the The Use Friction welding machine, Hot riveting welding machine, welding machine, FANUC, Diamond tools special equipment
- And Past times The CER Series Have The same The Size Implementation Charge and discharge Countermeasures the Products.
- Rated voltage range: 350to450VDC, capacity range: 82to1200μF
- Endurance with ripple current:8000hours at105°C
- Δspecified the endurance of 100million times charge-Discharge load, electrode can charge and discharge

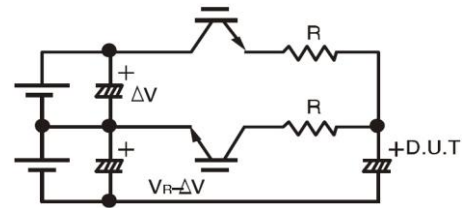
charge discharge

RoHS



**◆ SPECIFICATIONS**

items	characteristics		
Category temperature Range	-25~+105°C		
Rated voltage Range	315~450V <sub>DC</sub>		
Capacitance Tolerance	± 20% (M) 20°C/120HZ		
Leakage Current	I=3√CV or 5mA, whichever is smaller I: Where, I : Max. leakage current (μA), C: Nominal capacitance (μF), Rated voltage (V)at 20°Cafter 5 minutes		
Dissipation Factor (MAX)	Rated voltage (V <sub>dc</sub> )	315~450	20°C/120HZ
	tanδ Max	0.20	
Charge-Discharge endurance	After applying the following charge discharge load for 100million times,the capacitors shall meet the following requirements.		
	Charge voltage	Rated voltage	
	Discharge voltage	Rated voltage -150V	
	Charge-Discharge frequency	Refer to Standard Size table	
	Charge-Discharge Resistance	Refer to Standard Size table	
	Capacitance Change	Within ±20% of the initial value.	
	Dissipation Factor	Not more than 200% of the specified value.	
	Leakage Current	Not more than the specified value.	
Endurance	After applying rated voltage with rated ripple current for 5000 hours at 105°C, the capacitors shall meet the following requirements.		
	Capacitance Change	Within ±20% of the initial value.	
	Dissipation Factor	Not more than 200% of the specified value.	
	Leakage Current	Not more than the specified value.	
Low Temperature Stability/impedance ratio (MAX)	Rated voltage	315~450	120HZ
	Z (-25°C) /Z (20°C)	8	



**◆ size Fig (snap-in Fig)[mm]**

● Pin code: HZ (Ø22~Ø35) : Standard

● Pin code HP (Ø35)

● Pin code :HP (Ø16~Ø30)

● Pin code: H4 (Ø35) : Standard

The standard design has no plastic disc

**◆ PART NUMBERING SYSTEM**

123 456 78 9 10 11 12 13 14 15 16

VXS □□□ HZ □ □□□ M □□□

Series code    Pin code    Voltage code (ex160V→161, 315V→3B1)    Mounting clamp code: N,B,C    Capacitance code (ex470μF→471)    Size code

PC board pin-out

Circuit Board Mounting Holes

PC board pin-out

The standard design has no plastic disc

## ◆ STANDARD SIZE

WV Cap (μF) ØD	315															
	Ø22				Ø25				Ø30				Ø35			
150	22×25	0.82	46	10												
180	22×30	0.95	41	10												
220	22.35	1.11	37	10	25×25	0.98	43	10								
270	22×40	1.28	34	10	25×30	1.17	38	9	30×25	1.22	38	9				
330	22×45	1.45	32	9	25×35	1.35	35	8	30×30	1.44	34	7				
390	22×50	1.62	30	8	25×40	1.53	32	7	30×30	1.55	34	6	35×25	1.5	35	7
470					25×45	1.73	30	7	30×35	1.78	31	6	35×30	1.67	31	6
560					25×50	1.99	28	6	30×40	2.21	29	5	35×35	2.0	29	6
680									30×45	2.29	27	4	35×40	2.49	27	4
820									30×50	2.66	26	4	35×45	2.59	25	4
1000													35×50	2.92	24	4

WV Cap (μF) ØD	350															
	Ø22				Ø25				Ø30				Ø35			
120	22×25	0.74	46	10												
150	22×30	0.89	41	10	25×25	0.85	51	10								
180	22×35	1.02	37	10	25×30	0.99	38	10								
220	22×40	1.17	34	10	25×30	1.08	38	10	30×30							
270	22×45	1.34	32	10	25×35	1.25	35	10	30×35	1.12	38	10				
330					25×40	1.43	32	9	30×30	1.34	42	8	35×25	1.29	36	10
390					25×45	1.61	30	8	30×35	1.53	31	8	35×30	1.51	32	8
470									30×40	2.06	29	6	35×35	1.87	29	7
560									30×45	2.11	27	6	35×40	2.11	27	6
680													35×45	2.40	25	5
820													35×50	2.69	24	5

WV Cap (μF) ØD	385															
	Ø22				Ø25				Ø30				Ø35			
100	22×25	0.67	46	10												
120	22×30	0.78	41	10												
150	22×35	0.92	37	10	25×25	0.83	43	10								
180	22×40	1.05	34	10	25×30	0.97	38	10	30×25	1.00	38	10				
220	22×45	1.19	32	10	25×35	1.13	35	10	30×30	1.17	34	10	35×25	1.17	43	10
270	22×50	1.36	30	10	25×40	1.29	32	10	30×30	1.29	34	9	35×30	1.34	32	10
330					25×45	1.47	30	10	30×35	1.49	31	8	35×30	1.44	32	9
390									30×40	1.83	29	7	35×35	1.68	29	8
470									30×45	1.90	27	7	35×40	1.94	27	7
560													35×45	2.14	25	7
680													35×50	2.42	24	6

Charge-Discharge Frequency(HZ)

Charge-Discharge Resistance(Ω)

Ripple current(Ar.m.s./120HZ,105°C)

Cade size ØDxL (mm)

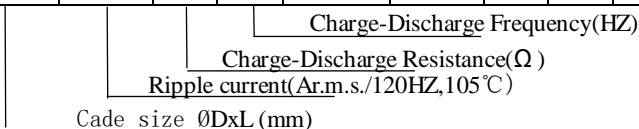


◆ **STANDARD SIZE**

Cap (µF) \ WV / ØD	400															
	Ø22				Ø25				Ø30				Ø35			
100	22×25	0.67	46	10												
120	22×30	0.79	41	10	25×25	0.76	42	10								
150	22×35	0.92	37	10	25×30	0.91	35	10								
180	22×40	1.05	34	10	25×30	0.97	38	10	30×25	1.00	38	10				
220	22×45	1.20	32	10	25×35	1.13	35	10	30×30	1.20	34	10	35×25	1.15	35	10
270					25×40	1.30	32	10	30×35	1.36	31	9	35×30	1.35	32	10
330					25×50	1.54	28	10	30×35	1.50	31	8	35×30	1.48	32	9
390									30×40	1.85	29	8	35×35	1.68	29	8
470									30×55	1.98	26	8	35×40	1.92	27	7
560													35×45	2.15	25	7
680													35×50	2.43	24	6

Cap (µF) \ WV / ØD	420															
	Ø22				Ø25				Ø30				Ø35			
82	22×25	0.60	46	10												
100	22×30	0.71	41	10												
120	22×30	0.77	41	10	25×25	0.74	42	10								
150	22×35	0.90	37	10	25×30	0.89	38	10								
180	22×40	1.03	34	10	25×35	1.01	35	10	30×25	0.98	38	10				
220	22×50	1.22	30	10	25×35	1.10	35	10	30×30	1.15	34	10	35×25	1.13	35	10
270					25×45	1.33	30	10	30×35	1.33	31	10	30×30	1.35	32	10
330					25×50	1.50	28	10	30×40	1.53	29	10	35×35	1.53	29	10
390									30×45	1.72	27	9	35×35	1.65	29	8
470									30×50	1.93	26	8	35×40	1.88	27	7
560													35×45	2.11	25	7

Cap (µF) \ WV / ØD	450															
	Ø22				Ø25				Ø30				Ø35			
82	22×25	0.61	46	10												
100	22×30	0.72	41	10												
120	22×35	0.82	37	10	25×25	0.75	42	10								
150	22×40	0.96	34	10	25×30	0.89	38	10	30×25	0.91	38	10				
180	22×45	1.08	32	10	25×35	1.03	35	10	30×30	1.06	34	10	35×25	1.04	35	10
220	22×50	1.14	30	10	25×40	1.18	32	10	30×30	1.17	34	10	35×30	1.21	32	10
270					25×45	1.34	30	10	30×35	1.35	31	10	35×30	1.34	32	10
330									30×40	1.55	29	10	35×35	1.55	29	10
390									30×50	1.80	32	9	35×40	1.75	27	9
470													35×45	1.97	25	8
560													35×50	2.21	24	7



Product specifications in this catalog are subject to change without notice. Request our product specifications before purchase and/or use. Please use our products based on the information contained in this catalog and product specifications